

January 31st, 2019

Press Release

Sumitomo Mitsui Asset Management Company Limited
Daiwa SB Investments Ltd.

Notification of new organization and corporate philosophy

Since issuing a joint press release on September 28th 2018 regarding the merger agreement between Sumitomo Mitsui Asset Management Company Limited (“SMAM” hereafter) and Daiwa SB Investments Ltd., we have been engaged in integration work towards the launch of Sumitomo Mitsui DS Asset Management Company Limited (“New Company” hereafter) on April 1st, 2019*. Today we hereby announce our organizational structure and corporate philosophy of New Company.

*Note: The merger is subject to approval and acceptance of notification by authorities in Japan and countries where our overseas offices are located.

1. CEO and Representative

Takashi Matsushita (current President & CEO of SMAM)

2. Management Team

Please see Annex 1 for our management team.

3. Organization

The design of the new organizational structure (illustrated in Annex 2) prioritizes enhancing our corporate governance, and efficiently delivering better customer experience.

New Company will set up a Nominating Committee, a Remuneration Committee and a Responsible Investment Committee under the board of directors. The Responsible Investment Committee, whose primary role is to monitor stewardship activities and conflicts of interest, is expected to work closely with FD Advisory Board**, to enhance our corporate governance by incorporating insights from external directors.

**Note: SMAM’s FD Third-Party Committee will be re-organized to form FD Advisory Board upon the merger.

New Company’s organizational structure will have seven divisions to ensure business activities are productive and efficient. We will also prioritize several strategic areas to deliver the best-in-class asset management services. The strategic areas include investment in capabilities that leverage Artificial Intelligence and Big Data, development of products and businesses that address wealth accumulation for retail investors, and improving asset management capabilities in global market particularly in Asia.

4. Corporate Philosophy

Our mission is to contribute to the sustained growth of all stakeholders, while our vision is to ensure that we work “Towards the Best Asset Management Firm for Your Better Quality of Life”. In the pursuit of these goals, we define “Our Values” as a Code of Conduct that all employees share. We believe practicing these values will enable us to quickly respond to structural changes in technologies and the global economy, and contribute to a better quality of life for our customers and all other stakeholders.

Corporate Philosophy

Our Mission & Vision

**Towards The Best Asset Management Firm
For Your Better Quality of Life.**

We, as professionals, focus on:

- Delivering the best-in-class investment performance, while maintaining the highest standards of fiduciary responsibility to our clients,
- Contributing to a diversified and sustainable society through our investment activities.

To these ends, we commit ourselves to:

- Aiming for collective growth, based on a respectful understanding of all stakeholders,
- Creating a flexible working environment that allows all employees to reach their full potential.

Our Values

Sincerity	<p><i>Customers’ interest first</i></p> <p>We act in fair and responsive manner by placing customers’ interest as our values to become their most trusted partner.</p>
Agility	<p><i>Time - strategic resources</i></p> <p>We address issues in a time-conscious manner to deliver new products and services to our customers earlier than peers.</p>
Challenge	<p><i>Confront the status quo</i></p> <p>We challenge norms by exploring extraordinary products, services and processes in pursuit of the highest standard of investment management services.</p>
Passion	<p><i>Strive for an extra basis point</i></p> <p>We dedicate ourselves to improve investment performance and business efficiency across all business areas.</p>
Teamwork	<p><i>Tackle conflict head-on in pursuit of value</i></p> <p>We embrace diversity of views and ideas, and make collective efforts to achieve what cannot be done by one person alone.</p>

5. Logo mark



6. Corporate Profile

Name	Sumitomo Mitsui DS Asset Management Company, Limited	
Paid in Capital	JPY 2 billion	
Home Address	Atago Green Hills MORI Tower 28F, 2-5-1 Atago, Minato-ku, Tokyo, 105-6228, Japan	
Ownership	Sumitomo Mitsui Financial Group	50.1%
	Daiwa Securities Group	23.5%
	Mitsui Sumitomo Insurance	15.0%
	Sumitomo Life Insurance	10.4%
	Sumitomo Mitsui Trust Bank	1.0%
Date of Merger	April 1 st , 2019	

Contact Information

Sumitomo Mitsui Asset Management Company Limited

Takenari Suzuki
takenari_suzuki@smam-jp.com

+81-3-5405-0583

Daiwa SB Investments Ltd.

Michio Obara
obara@daiwasbi.co.jp

+81-3- 6205-0373

Annex 1: New Management Team

Directors/Audit & Supervisory Board Members

Name	Title (Departments in Charge)	Current Position
Takashi Matsushita	Representative Director, President and CEO	Representative Director, President and CEO of SMAM
Masaaki Goto	Representative Director and Deputy President Executive Officer	Representative Director, President and CEO of Daiwa SB Investments
Shingo Imai	Director and Senior Managing Executive Officer	Director, Senior Managing Executive Officer of SMAM
Takashi Kawahori	Director and Senior Managing Executive Officer	Director, Senior Managing Executive Officer of SMAM
Chikatomo Hodo	Director (Outside)	Director (Outside) of SMAM
Noriyuki Yanagawa	Director (Outside)	Director (Outside) of SMAM
Jun Arai	Director (Outside)	Director (Outside) of Daiwa SB Investments
Takayuki Nakata	Audit & Supervisory Board Member	Audit & Supervisory Board Member of Daiwa SB Investments
Hiroshi Saito	Audit & Supervisory Board Member (Outside)	Audit & Supervisory Board Member (Outside) of Daiwa SB Investments
Osamu Itagaki	Audit & Supervisory Board Member	Audit & Supervisory Board Member of SMAM
Toshikazu Tagawa	Audit & Supervisory Board Member (Outside)	Audit & Supervisory Board Member (Outside) of SMAM
Yasushi Manago	Audit & Supervisory Board Member (Outside)	Audit & Supervisory Board Member (Outside) of SMAM

Executive Officers

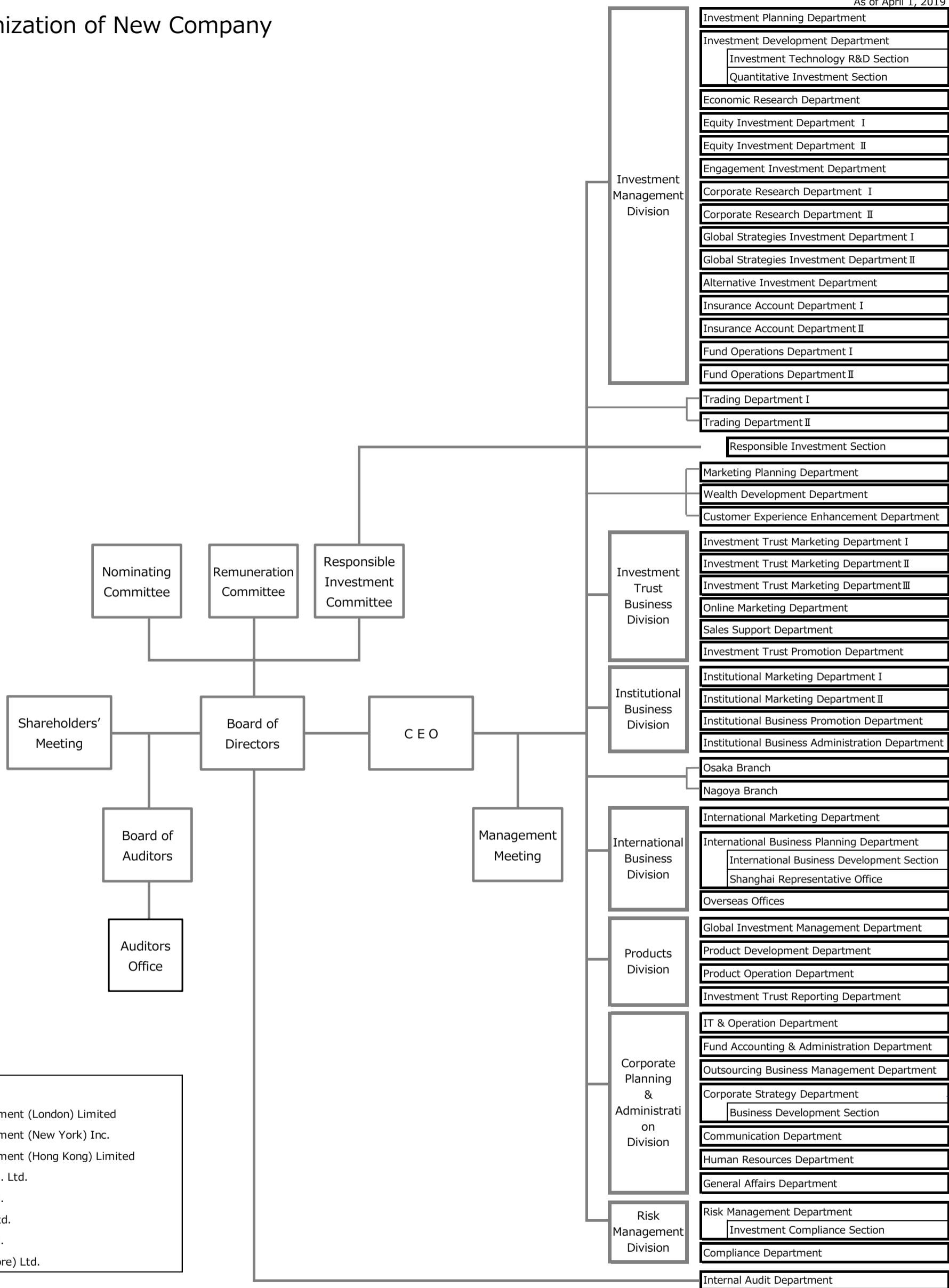
Name	Title (Departments in Charge)	Current Position
Takashi Matsushita	Representative Director, President and CEO	Representative Director, President and CEO of SMAM
Masaaki Goto	Representative Director and Deputy President Executive Officer	Representative Director, President and CEO of Daiwa SB Investments
Shingo Imai	Director and Senior Managing Executive Officer Head of Investment Management Division (Economic Research Department, Insurance Account Department I and II)	Director, Senior Managing Executive Officer of SMAM
Takashi Kawahori	Director and Senior Managing Executive Officer (Human Resources Department, General Affairs Department)	Director, Senior Managing Executive Officer of SMAM
Yoshihiro Horikawa	Deputy President Executive Officer Head of Risk Management Division (Risk Management Department, Compliance Department)	Representative Director, Deputy President of Daiwa SB Investments
Yoshio Urata	Senior Managing Executive Officer (IT & Operation Department)	Senior Managing Director, Senior Managing Executive Officer of Daiwa SB Investments
Hiroaki Saito	Senior Managing Executive Officer Deputy Head of Investment Management Division	Senior Managing Director, Senior Managing Executive Officer of Daiwa SB Investments
Tetsuya Kawaguchi	Senior Managing Executive Officer Head of Investment Trust Business Division (Investment Trust Promotion Department)	Senior Managing Director, Senior Managing Executive Officer of Daiwa SB Investments
Keiji Komagata	Senior Managing Executive Officer (Investment Trust Marketing Department I and III, Sales Support Department)	Senior Managing Executive Officer of Daiwa SB Investments
Kenji Imamura	Senior Managing Executive Officer (IT & Operation Department)	Senior Managing Executive Officer of Daiwa SB Investments
Naoya Miyagaki	Senior Managing Executive Officer Head of International Business Division (International Business Planning Department)	Director, Senior Managing Executive Officer of SMAM
Makoto Kamiya	Senior Managing Executive Officer (Corporate Strategy Department, Communication Department)	Managing Director, Managing Executive Officer of Daiwa SB Investments
Yuichiro Yoda	Managing Executive Officer (Institutional Marketing Department I and II)	Managing Executive Officer of SMAM
Makoto Shiraga	Managing Executive Officer (Osaka Branch)	Managing Executive Officer of Daiwa SB Investments
Mitsuya Kwarazaki	Managing Executive Officer (Institutional Business Promotion Department, Institutional Business Administration Department)	Managing Executive Officer of SMAM

Annex 1: New Management Team

Executive Officers

Name	Title (Departments in Charge)	Current Position
Tsuneto Iki	Managing Executive Officer Head of Products Division (Product Development Department, Product Operation Department, Investment Trust Reporting Department, Marketing Planning Department, Wealth Development Department, Customer Experience Enhancement Department)	Managing Executive Officer of SMAM
Hideomi Ozaki	Managing Executive Officer Head of Institutional Business Division	Executive Officer of Daiwa SB Investments
Satoru Yoshida	Managing Executive Officer Deputy Head of International Business Division	Executive Officer of SMAM
Hidehiro Fujiwara	Managing Executive Officer (Equity Investment Department II, Corporate Research Department II)	Executive Officer of Daiwa SB Investments
Tsuyoshi Imai	Managing Executive Officer (Trading Department I and II, IT & Operation Department)	Executive Officer of SMAM
Tetsuya Tobe	Executive Officer Deputy Head of Risk Management Division	Executive Officer of SMAM
Shin Ito	Executive Officer (Fund Accounting & Administration Department, Outsourcing Business Management)	Executive Officer of SMAM
Osamu Ueyama	Executive Officer (Marketing Planning Department, Wealth Development Department, Customer Experience Enhancement Department, Investment Trust Marketing Department I and III)	Executive Officer of SMAM
Tetsuya Shimode	Executive Officer (Asian Region of International Business Division)	Executive Officer of SMAM
Koichi Kinoshita	Executive Officer (Equity Investment Department I, Engagement Investment Department, Corporate Research Department I)	Executive Officer of SMAM
Takashi Kume	Executive Officer (Investment Development Department, Fund Operations Department I)	Executive Officer of SMAM
Takaaki Baba	Executive Officer (International Marketing Department)	Director, Executive Officer of Daiwa SB Investments
Teruto Itami	Executive Officer (Human Resources Department)	Executive Officer of Daiwa SB Investments
Satoru Sakai	Executive Officer (Global Strategies Investment Department II, Fund Operations Department II)	Executive Officer of Daiwa SB Investments
Jun Fukashiro	Executive Officer (Global Strategies Investment Department I)	Executive Officer of SMAM
Kazuhiisa Shimbo	Executive Officer (Corporate Strategy Department, Communication Department)	Executive Officer of SMAM
Akira Onuki	Executive Officer (Alternative Investment Department, Global Investment Management Department)	Executive Officer of SMAM
Hiroyasu Maekawa	Executive Officer (Investment Trust Marketing Department II, Online Marketing Department)	Executive Officer of SMAM
Takeshi Omasa	Executive Officer (Investment Planning Department)	Executive Officer of Daiwa SB Investments
Kazushi Iwai	Executive Officer Deputy Head of Products Division	Executive Officer of Daiwa SB Investments
Kazuhiro Horie	Executive Officer (International Business Development Section)	General Manager of Daiwa SB Investments

Annex 2: Organization of New Company



***Overseas Offices**
 Sumitomo Mitsui Asset Management (London) Limited
 Sumitomo Mitsui Asset Management (New York) Inc.
 Sumitomo Mitsui Asset Management (Hong Kong) Limited
 UOB-SM Asset Management Pte. Ltd.
 Daiwa SB Investments (UK) Ltd.
 Daiwa SB Investments (USA) Ltd.
 Daiwa SB Investments (HK) Ltd.
 Daiwa SB Investments (Singapore) Ltd.